

Toot-Toot Friends™

Advent Calendar



VTech understands that a child's needs and abilities change as they grow and with that in mind we develop our toys to teach and entertain at just the right level...

Pre-School

Interactive toys to develop their imagination and encourage language development

vtech Baby

Toys that will stimulate their interest in different textures, sounds and colours

I am...

...responding to colours, sounds and textures

...understanding cause and effect

...learning to touch, reach, grasp, sit-up, crawl and toddle

Birth-36 months



I want...

...to get ready for school by starting to learn the alphabet and counting

...my learning to be as fun, easy and exciting as can be

...to show my creativity with drawing and music so my whole brain develops

3-6 years



Electronic Learning Computers

Cool, aspirational and inspiring computers for curriculum related learning

I need...

...challenging activities that can keep pace with my growing mind

...intelligent technology that adapts to my level of learning

...National Curriculum based content to support what I'm learning at school

4-10 years

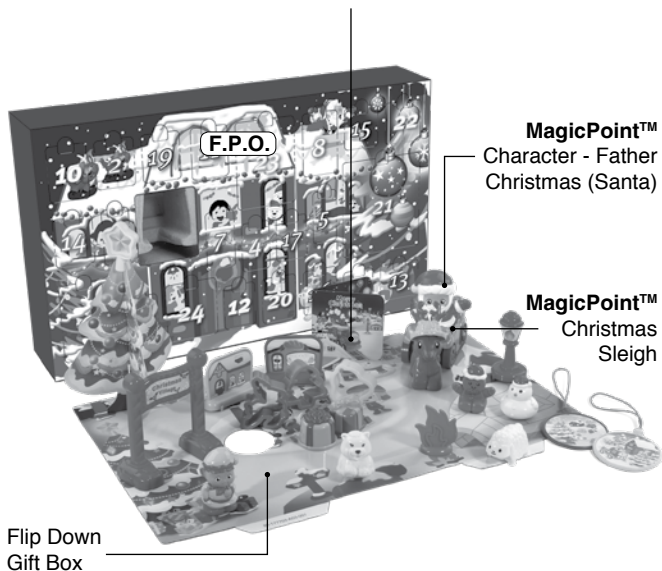


To learn more about this and other VTech® products, visit www.vtech.co.uk

INTRODUCTION

Thank you for purchasing the **VTech® Toot-Toot Friends™ Advent Calendar!** Watch Father Christmas (Santa) come to life when you place him on a **MagicPoint™** location. You can flip the box down to celebrate Christmas with Father Christmas and his friends for more fun!

Christmas Card



INCLUDED IN THIS PACKAGE

NOTE: This toy is not intended for teething.

- One instruction manual



- One **MagicPoint™** character - Father Christmas (Santa)



- One dummy character - Elf



- One Christmas Sleigh with **MagicPoint™**



- One reindeer



- One snow man



- One sheep



- One gingerbread man



- One bear



- One reindeer hat



- Three biscuit cutters



- Two Christmas ornaments



- Two building play pieces



- Two presents



- One Christmas card



- One fire play piece



- One Christmas tree



- One sign



- One Christmas star



- One lamp post

WARNING:

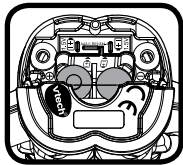
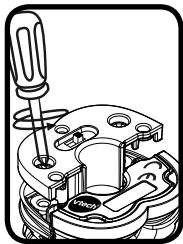
All packing materials such as tape, plastic sheets, packaging locks, removable tags, cable ties and packaging screws are not part of this toy, and should be discarded for your child's safety.

NOTE: Please keep this parent's guide as it contains important information.

GETTING STARTED

Battery Installation - Character

1. Make sure the character is **OFF**.
2. Locate the battery cover on the bottom of the character. Use a screwdriver to loosen the screws.
3. Install 2 new AAA size (LR03/AM-4) batteries following the diagram inside the battery box. (The use of new alkaline batteries is recommended for maximum performance).
4. Replace the battery cover and tighten the screws to secure.



BATTERY NOTICE

- Use new alkaline batteries or fully charged NI-MH (Nickel Metal-hydride) rechargeable batteries for best performance.
- Use only batteries of the same or equivalent type as recommended.
- Do not mix different types of batteries: alkaline, standard (carbon-zinc) or rechargeable, or new and used batteries.
- Do not use damaged batteries.
- Insert batteries with the correct polarity.
- Do not short-circuit the battery terminals.
- Remove exhausted batteries from the toy.
- Remove batteries during long periods of non-use.
- Do not dispose of batteries in fire.
- Do not charge non-rechargeable batteries.
- Remove rechargeable batteries from the toy before charging (if removable).
- Rechargeable batteries are only to be charged under adult supervision.

Disposal of batteries and product



The crossed-out wheellie bin symbols on products and batteries, or on their respective packaging, indicates they must not be disposed of in domestic waste as they contain substances that can be damaging to the environment and human health.



The chemical symbols Hg, Cd or Pb, where marked, indicate that the battery contains more than the specified value of mercury (Hg), cadmium (Cd) or lead (Pb) set out in Battery Directive (2006/66/EC).

The solid bar indicates that the product was placed on the market after 13th August, 2005.

Help protect the environment by disposing of your product or batteries responsibly.

For more information, please visit:

www.recycle-more.co.uk

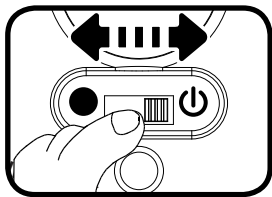
www.recyclenow.com

PRODUCT FEATURES - CHARACTER

1. On/Off Switch

The **On/Off Switch** is located on the bottom of the character.

To turn the character **On**, slide the **On/Off Switch** to the **On** (⏻) position. To turn the character **Off**, slide the **On/Off Switch** to the **Off** (●) position.



2. Automatic Shut Off

To preserve battery life, the **VTech® Toot-Toot Friends™** character will automatically shut off after several minutes without input. The character can only be turned on again by pressing the **Light Up Button** or placing it on a **MagicPoint™** location.

The **Light Up Button** will flash several times and the character will shut off when the battery level is low. If this happens, we suggest replacing the batteries with new ones.

ACTIVITIES - CHARACTER

1. Light Up Button

Press the character's **Light Up Button** to hear phrases, songs, melodies and fun sounds. The light will flash with the sounds.



2. **MagicPoint™ Location**

Place the **MagicPoint™ Character** on the play set's **MagicPoint™** location to hear fun phrases, sounds, melodies and sing-along songs.

The character can also interact with other **VTech® Toot-Toot Friends™** play sets (each sold separately).



PRODUCT FEATURES - ADVENT CALENDAR

1. **24 Gift Windows**

The Advent Calendar gift box includes 24 windows with gifts to countdown to Christmas. Your child can open the windows to find fun gifts.



2. **Gift Box**

Flip the gift box down to reveal a Christmas Winter Wonderland that encourages imaginative play.



SING-ALONG SONG LYRICS

1. Oh! Jingle bells, jingle bells, jingle all the way!
Oh what fun it is to share Christmas cheer today!
2. We wish you a merry Christmas.
We wish you a merry Christmas.
We wish you a merry Christmas and a happy new year!
3. I've got my friends,
It's time to play!
Let's learn and share,
And sing today!

MELODY LIST

1. Deck the Halls
2. The Twelve Days of Christmas
3. Up on the Housetop
4. Jingle Bells
5. Dance of the Sugar Plum Fairy
6. We Wish You a Merry Christmas

CARE & MAINTENANCE

1. Keep the product and its metal parts clean by wiping them with a slightly damp cloth.
2. Keep the product out of direct sunlight and away from any direct heat source.
3. Remove the batteries when the product is not in use for an extended period of time.
4. Do not drop the product on a hard surface and do not expose the product to excess moisture or water.

TROUBLESHOOTING

If for some reason the toy stops working or malfunctions while playing with the **MagicPoint™** accessory, please remove the character from the accessory and place the character back onto the **MagicPoint™** location. If the toy still does not function, or if for some reason the toy stops working or malfunctions on its own, please follow these steps:

1. Please turn the toy **OFF**.
2. Interrupt the power supply by removing the batteries.
3. Let the toy stand for a few minutes, then replace the batteries.
4. Turn the toy **ON**. The toy should now be ready to play with again.
5. If the toy still does not work, install a brand new set of batteries.

If the problem persists, please call our Consumer Services Department on 0330 678 0149 (from UK) +44 330 678 0149 (outside UK) and a service representative will be happy to help you.

TECHNICAL SUPPORT

If you have a problem that cannot be solved by using this guide, we encourage you to visit us online or contact our Consumer Services Department with any problems and/or suggestions that you might have. A service representative will be happy to assist you. Before requesting support, please be ready to provide or include the information below:

- The name of your product or model number (the model number is typically located on the back or bottom of your product).
- The actual problem you are experiencing.
- The actions you took right before the problem started.

Internet: www.vtech.co.uk

Phone: 0330 678 0149 (from UK) +44 330 678 0149 (outside UK)

IMPORTANT NOTE:

Creating and developing **VTech®** products is accompanied by a responsibility that we take very seriously. We make every effort to ensure the accuracy of the information which forms the value of our products. However, errors sometimes can occur. It is important for you to know that we stand behind our products and encourage you to call our Consumer Services Department at 0330 678 0149 (from UK) +44 330 678 0149 (outside UK) with any problems and/or suggestions that you might have. A service representative will be happy to help you.



CLASS 1
LED PRODUCT



PRODUCT REGISTRATION

Visit www.vtech.co.uk/clubvtech/login
to register your VTech product

By joining the VTech Club you can also enter competitions, find out about news and events, seek expert advice for parents and let your kids play fun learning games and activities.



PRODUCT WARRANTY

Thank you for choosing this quality product from VTech. We hope it will bring many hours of entertainment, imaginative play and learning.

1. The product detailed above is covered by a one year warranty from the date of purchase, against any defects in materials or workmanship.
2. The product may be returned to the place of purchase. Alternatively the product can be returned to VTech Electronics Europe plc (see address below), with proof of purchase, without proof of purchase no replacement will be provided.
3. VTech Electronics Europe plc will examine the product and if it is found to be defective due to faulty materials or workmanship, will replace the product at their discretion.
4. If the product covered by this warranty is damaged due to misuse, modification or unauthorised repair, or because of faulty batteries, battery discharge or incorrect electrical connections, then this warranty becomes void.
5. This warranty is personal to the original purchaser and is not transferable.
6. Breakages to the LCD screen are not covered by the warranty.
7. Returns to VTech Electronics Europe plc should include a cheque or postal order for £1.50 towards the cost of return postage and packaging.
8. Products returned to VTech Electronics Europe plc, should be addressed as follows and packed carefully to avoid damage in transit (Please do not include batteries or adaptor). Please include details of the fault together with your name and address.
9. To keep an online record of your warranty, please register your product online at www.vtech.co.uk/warranty

Vtech Electronics EU PLC, c/o XPO Logistics, Warehouse 350, Cat & Fiddle Lane, West Hallam, DE7 6HE

THIS WARRANTY IS OFFERED AS AN EXTRA BENEFIT AND DOES NOT AFFECT CONSUMERS' STATUTORY RIGHTS.

This warranty is valid for the UK and Eire only. For products purchased outside the UK and Eire, please contact your local distributor or place of purchase.



**Visit our website for more
information about our products,
downloads, resources and more.**

www.vtech.co.uk

